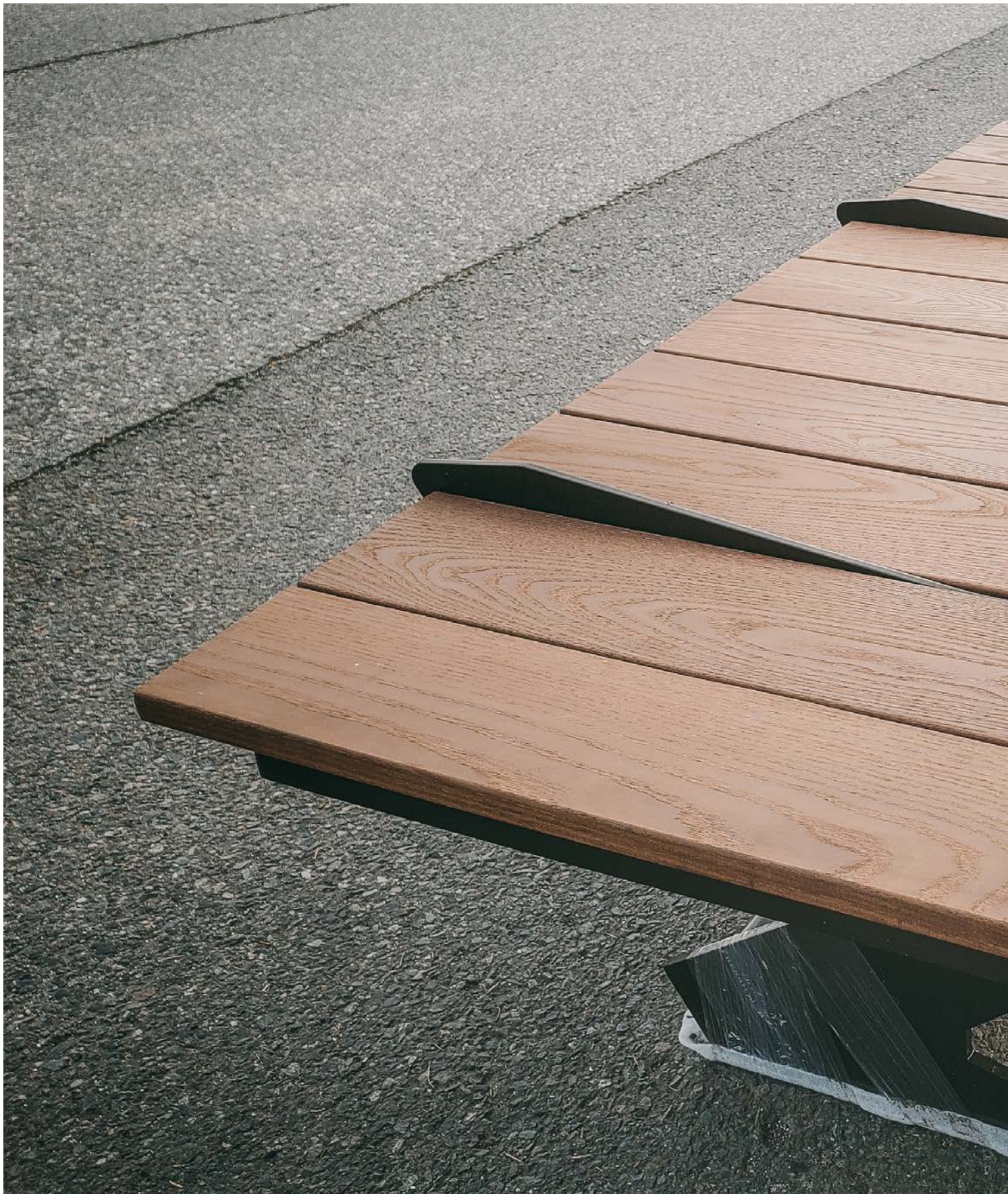
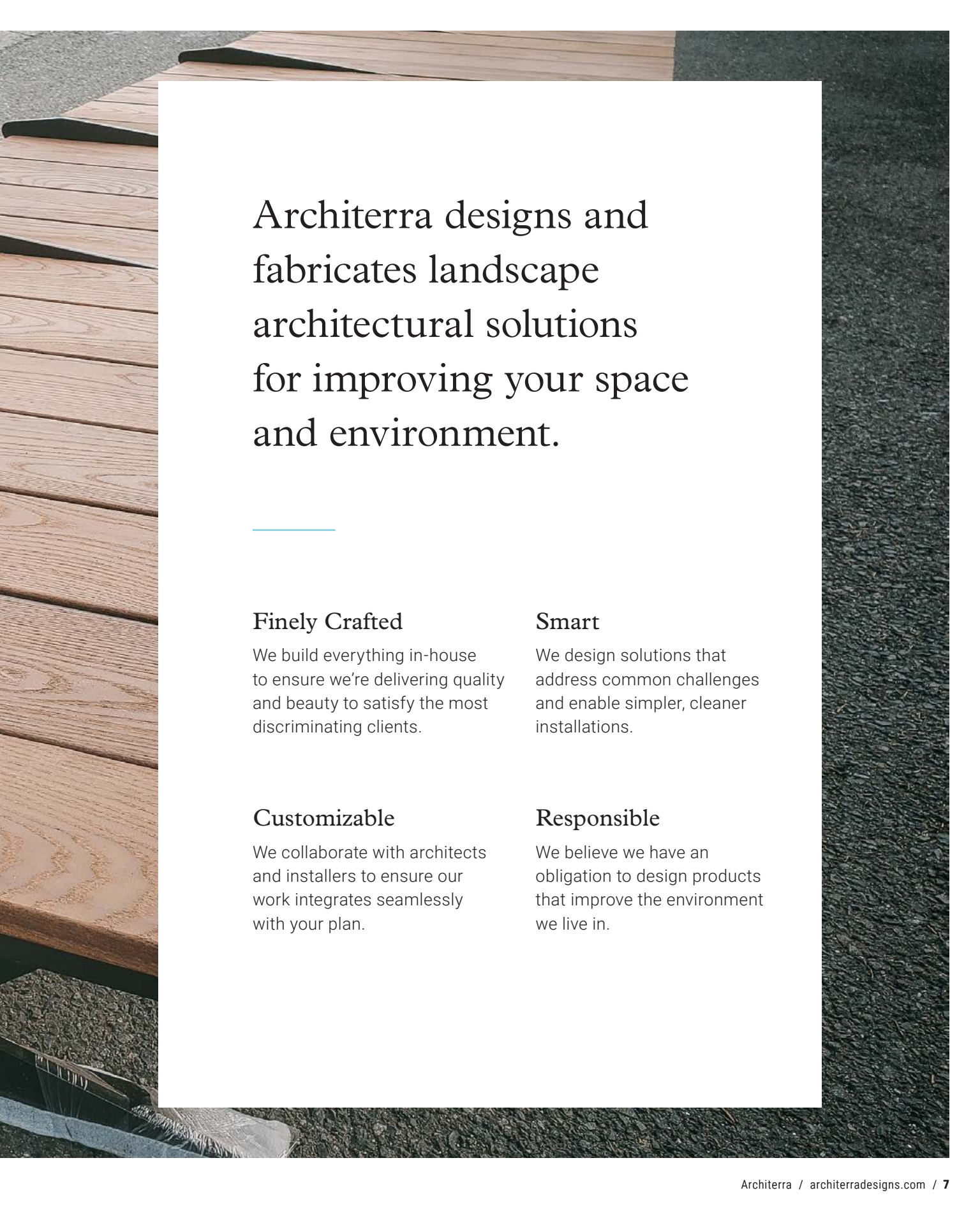


Club Monaco / Seattle, WA

Contents

About Us	6
Recuro Bioretention Planter	8
Planters	12
Water Features	18
Decorative Screens	20
Features & Options	22
Design Styles	24
Color Options & Finishes	25



The background of the page is a photograph of a wooden deck railing on the left and a dark mulch bed on the right. The railing is made of light-colored wood with a visible grain. The mulch is dark and textured. A white rectangular box is overlaid on the center of the image, containing the main text and four key value propositions.

Architerra designs and fabricates landscape architectural solutions for improving your space and environment.

Finely Crafted

We build everything in-house to ensure we're delivering quality and beauty to satisfy the most discriminating clients.

Smart

We design solutions that address common challenges and enable simpler, cleaner installations.

Customizable

We collaborate with architects and installers to ensure our work integrates seamlessly with your plan.

Responsible

We believe we have an obligation to design products that improve the environment we live in.

Recuro Bioretention Planter

Protecting the environment is an essential responsibility of any landscape project. We believe in going one step further, designing a bioretention solution that complements the design of your space while actively improving the ecology that sustains it.

Smaller Footprint

Most bioretention solutions today are built from concrete, requiring walls at least eight inches thick in addition to the required bioretention footprint. Recuro is built with .125" – .375"+ thick marine grade aluminum or weathering steel to allow for a significantly smaller footprint than concrete-based solutions. This smaller footprint means you can place more units, making it easier to exceed filtering guidelines.

Simple to Install

Concrete bioretention solutions can occupy large areas of your project with equipment for days at a time. Recuro's aluminum or steel construction allows it to be installed by a small team in just a few hours.

Customizable

Recuro's modular design and powder coated aluminum construction enables it to be customized to fit your specific space constraints and visual aesthetic.

Sustainable

As part of our obligation to maximize the conservation of natural resources, Recuro is made from 25-85%+ recycled content and is fully recyclable. We also ensure there's a transparent chain of custody back to the raw material source. In an effort to reduce or eliminate the usage of hazardous materials, Recuro is RoHS 3 compliant, and we only use coatings with low to no VOC emissions.

Approved

Recuro is designed to be compatible with several types of filter soils and media to meet requirements across multiple municipalities. Recuro is approved for use by the Washington State Department of Ecology as a functional equivalent technology.



Mixed-use building / Seattle, WA

Noninfiltrating



Available in sizes up to L 12' x W 8' - height as required

Infiltrating



Available in sizes up to L 12' x W 8' - height as required

Modular Noninfiltrating



Sections up to W 8' Bolted together for countless, size and shape combinations for larger single cells

Modular Infiltrating



Sections up to W 8' Bolted together for countless, size and shape combinations for larger single cells

Curved



Organic or curvilinear shapes to match design ideas

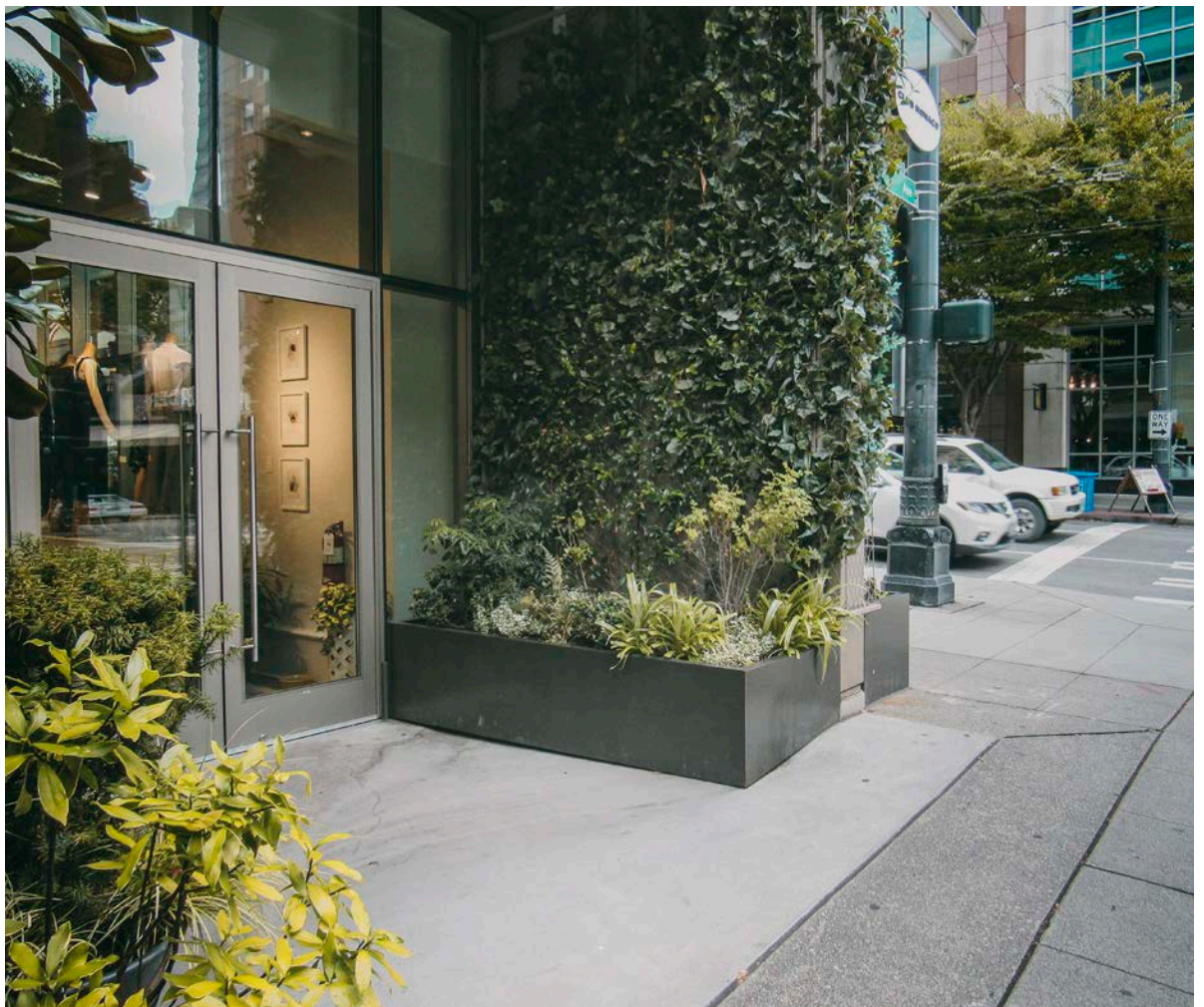
Custom



Fully customizable linked, flow through cells or in combination with swale or liner applications

Planters

Metal planters help define and enhance your space. They're useful for highlighting entryways, acting as spatial divisions or guardrails, or just adding a pop of color. Available in multiple sizes to support any use — from residential to large scale commercial or streetscape use.



Club Monaco / Seattle, WA

Square



Sizes:

- L 18" W 18" H 18"
- L 24" W 24" H 24"
- L 30" W 30" H 30"
- L 36" W 36" H 36"
- L 36" W 36" H 24"
- L 36" W 36" H 32"
- L 42" W 42" H 42"
- L 48" W 48" H 36"

Cylinder



Sizes:

- D 18" H 20"
- D 24" H 20"
- D 32" H 28"

Tapered Cylinder



Sizes:

- D 24" H 24"
- D 32" H 32"
- D 40" H 42"

Tall Cylinder



Sizes:

- D 16" H 32"
- D 18" H 36"
- D 20" H 40"

Column



Sizes:

- L 12" W 12" H 24"
- L 12" W 12" H 30"
- L 12" W 12" H 36"
- L 15" W 15" H 30"
- L 17" W 17" H 36"

Curved



Sizes:

- L 48" W 15" H 18"
- L 56" W 18" H 18"
- L 72" W 22" H 22"

Ring



Sizes:

- L 24" W 24" H 24"
- L 30" W 30" H 30"
- L 40" W 24" H 24"
- L 48" W 24" H 24"

Rectangle



Sizes:

- L 48" W 20" H 14"
- L 48" W 24" H 36"
- L 48" W 24" H 24"
- L 60" W 26" H 14"
- L 60" W 30" H 36"
- L 60" W 40" H 36"

Large Rectangle



Sizes:

- L 72" W 24" H 42"
- L 72" W 32" H 48"
- L 84" W 24" H 30"
- L 96" W 32" H 36"
- L 96" W 32" H 32"

Narrow Rectangle



Sizes:

- L 30" W 16" H 24"
- L 40" W 16" H 18"
- L 40" W 12" H 18"

Lattice Box



Sizes:

- L 24" W 24" H 24"
- L 30" W 30" H 30"
- L 40" W 24" H 24"
- L 48" W 24" H 24"

Rustic Box



Sizes:

- L 24" W 24" H 24"
- L 30" W 30" H 30"
- L 40" W 24" H 24"
- L 48" W 24" H 24"

Corner



Sizes:

- L 24" W 24" H 30"
- L 28" W 28" H 24"
- L 36" W 36" H 24"
- L 48" W 48" H 36"

Taper



Sizes:

- L 12" W 12" H 30"
- L 15" W 15" H 30"
- L 17" W 17" H 36"

Rounded Taper



Sizes:

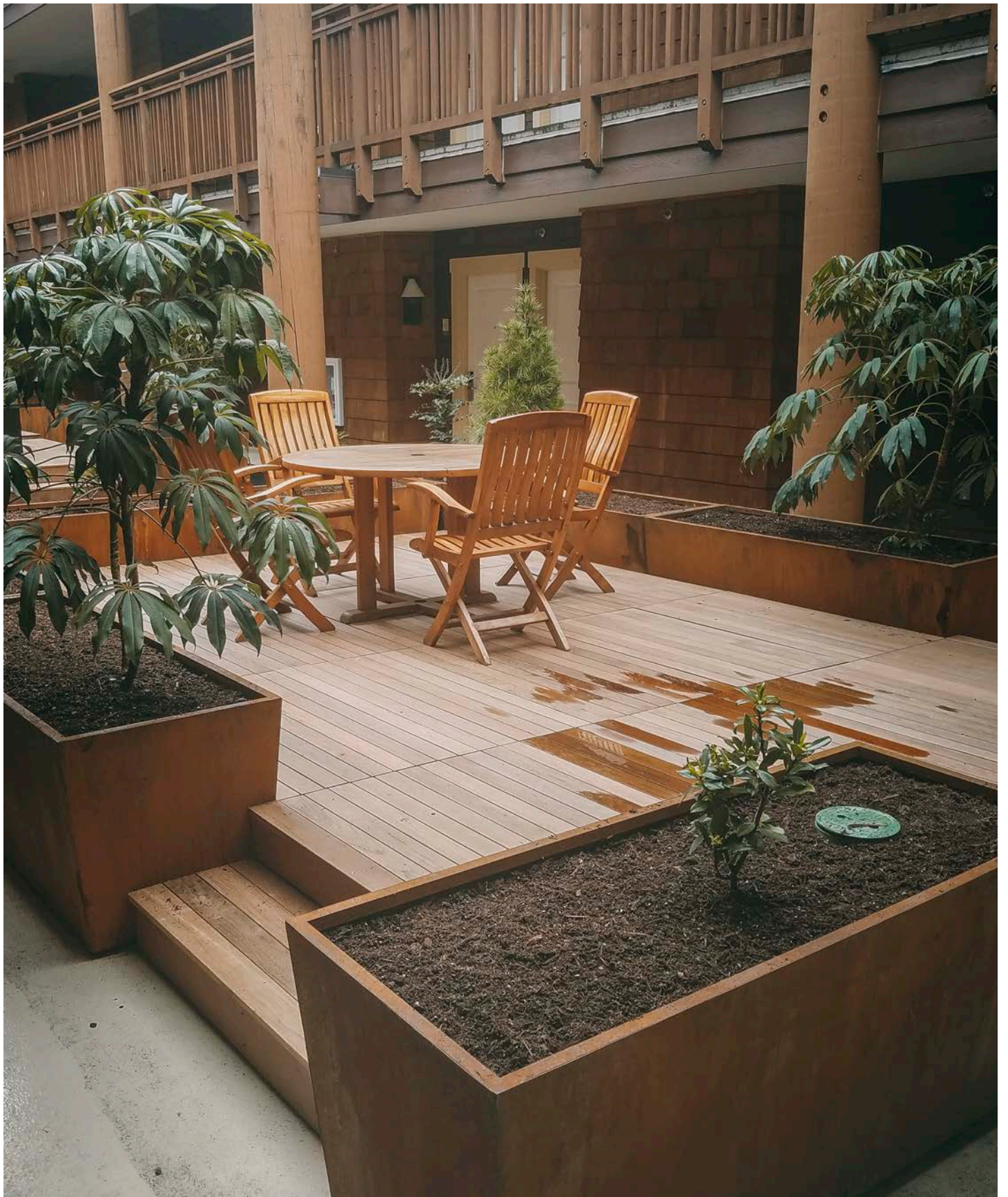
- L 12" W 12" H 30"
- L 15" W 15" H 30"
- L 17" W 17" H 36"

Ellipse



Sizes:

- L 40" W 20" H 24"
- L 48" W 24" H 24"
- L 60" W 30" H 30"



Alderbrook Resort / Union, WA

Water Features

Whether it's a small entry piece or a larger feature designed to be the focal point of your courtyard, nothing brings a space to life like a water feature. Available in multiple designs and sizes.



Summit Pacific Medical Center / Elma, WA

Arch



Sizes:

- L 60" W 60" H 84"
- L 72" W 72" H 96"

Wall



Sizes:

- L 48" W 12" H 72"
- L 72" W 24" H 96"
- L 96" W 24" H 96"

Basin



Sizes:

- L 60" W 24" H 18"
- L 72" W 24" H 20"
- L 96" W 30" H 22"
- L 120" W 30" H 24"

Bubbler

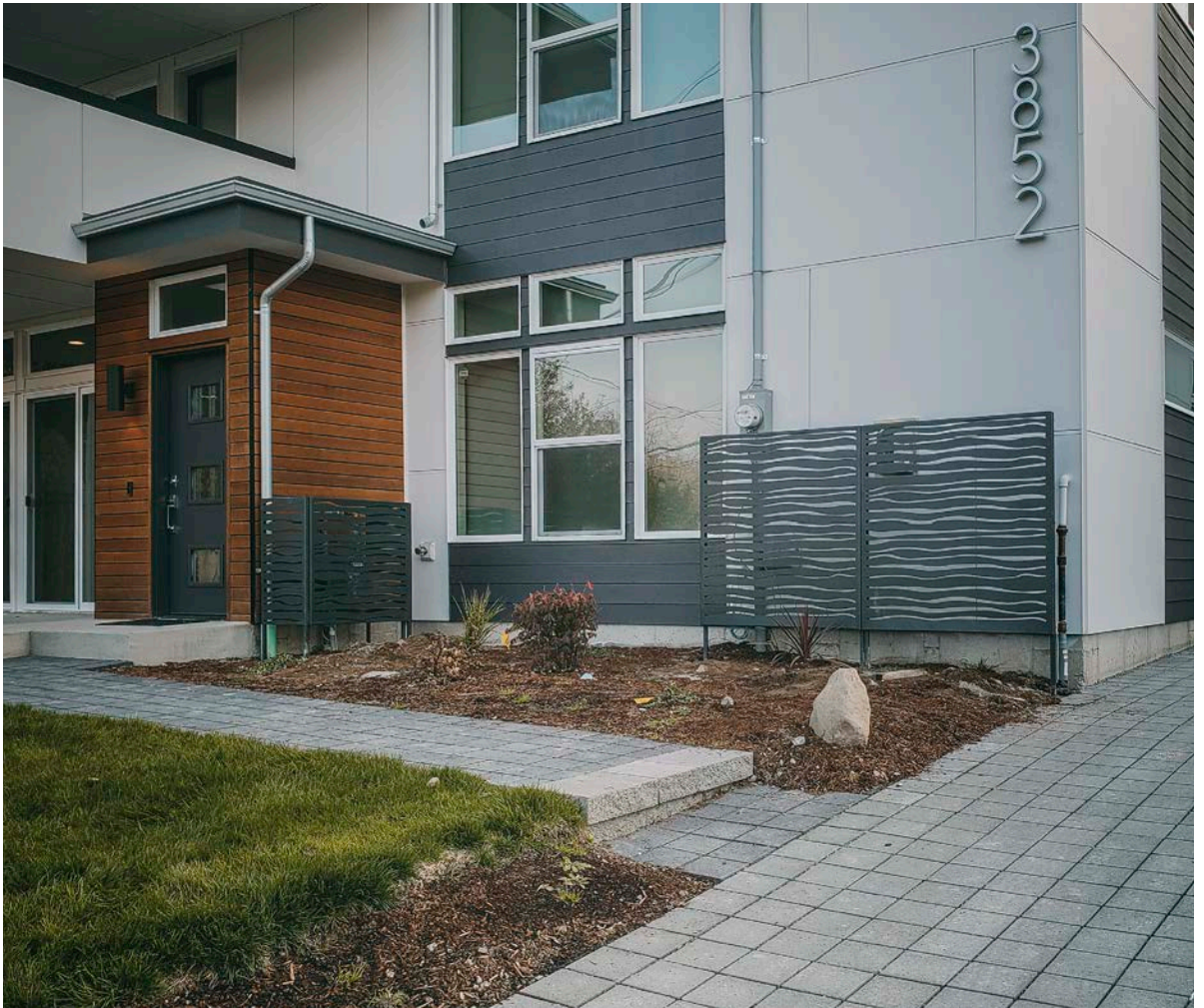


Sizes:

- D 24" H 12"
- D 30" H 18"

Decorative Screens

Simple additions that can serve a multitude of purposes. Useful for decorative privacy, providing a structure for plants to grow on, or just adding a little interest and character to your space.

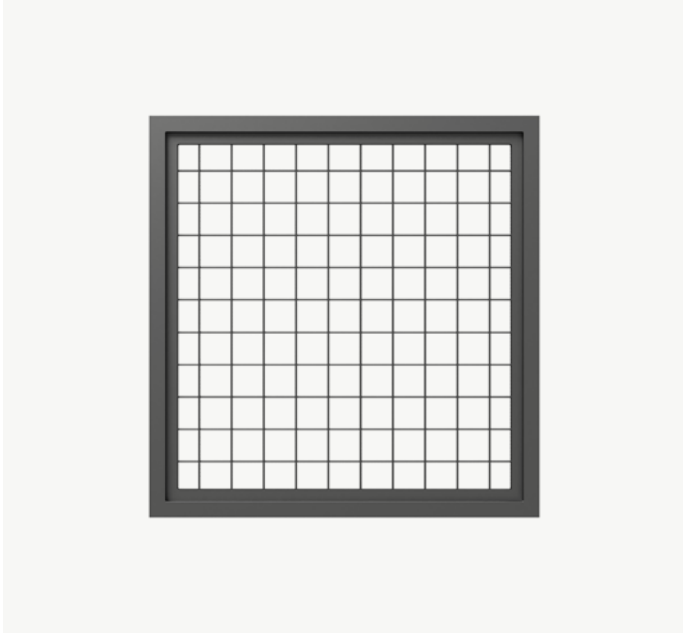


Residence / Seattle, WA

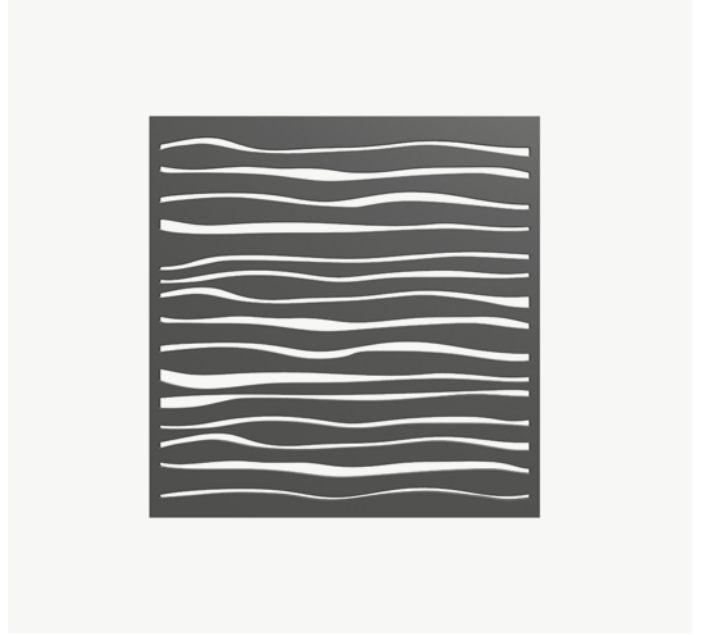
Screens Available In:

Standard sizes and modular sections can be mounted to planters, walls, or freestanding on the ground. Standard sizes 40" x 40", up to 60" wide and 120" long, size or modular sections can be sized to match the dimensions of planters.

Mesh



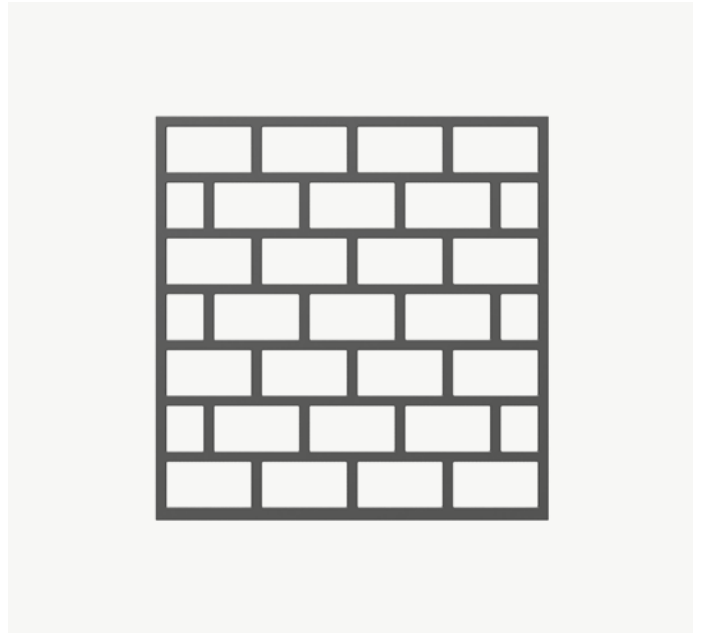
Wave



Weave



Offset



Features & Options

Customization without reinventing the wheel — a selection of proven solutions to common (and some not-so-common) landscape needs.

For All Products

Leveling Feet

Easily adjustable leveling feet in several heights and weight capacities.

- Standard 0-3" 200 lbs.
- Heavy Duty 0-3"
- Custom 0-5" 5000 lbs. +

Utility Sleeve

1" I.D. sleeve to feed irrigation piping, electrical, speaker wire, etc. Designed to be hidden from view while remaining easily accessible.

Lighting

- Integral wall wash/step lighting with integral block outs
- LED face light
- LED toe kick light

For Planters

Drain Fittings

Welded fittings designed to divert drain runoff to avoid staining on adjacent surfaces.

Casters

Heavy duty casters to add mobility to your planters.

- Standard swivel
- Locking swivel

Drip Tray

Tray that prevents drainage from leaking onto (and potentially staining) adjacent hard surfaces. Designed to match the style and color of your planter.

Irrigation Reservoir

Integral reservoir to enable planters to be self-irrigating — perfect for when external irrigation is either impractical or not desired for design purposes.

Plant Anchor Tie Off

Integral tie off points to allow the attachment of stabilizing cables for root balls, or guy wires for larger plants and trees.

Custom Cut Design Elements

Custom design options for adding your logo, address, or other unique design elements.

For Water Features

Pump

Specifically matched for individual features and sizes for optimal flows and controls.

- Submersible
- Centrifugal

Debris Filter

Mesh screen filter to keep dirt and debris out and prevent blockages. Fully removable and easily maintained.

Autofill

To automatically add water when needed.

- Mechanical
- Electronic float control

Plastic Grate

Rigid grating with standard 1" openings that can be safely covered with decorative rock. Especially useful for creating a false bottom to conceal pumps and components.

Scupper Spouts

Available in a variety of styles for varying visual and sound effects.

Custom Cut Design Elements

Custom design options for adding your logo, address, or other unique design elements.

For Bioretention Planters

Drain Port Gasket

Removable gasket assembly for drain lines and irrigation. Available in custom sizes.

Scupper/Spout

Available in a variety of styles for different design effects and functional uses.

Weir / Overflow Options

Simple or adjustable weir and overflow options to meet regulations but with different design options.

Level Spreader / Runnel

Decorative options for conveying and distributing water over longer distances, between cells, or as overflows. An easily customized element unique to aluminum or steel bioretention planters, this feature greatly reduces the need for additional downspouts or bioretention planters.

Splash Block

An open-bottomed box designed to slow water coming into your bioretention planter via a layer of decorative rock or grating. A well-designed way to avoid scouring and meet bioretention requirements.

Modular Component Package

Everything you'll need to connect modular bioretention planters, scuppers, and runnels. Includes all necessary hardware and a waterproof gasket.

Drainage Components

Project-specific drainage fittings, piping, overflow grates, etc. shipped in a single package for easy installation.

Custom Cut Design Elements

Custom design options for adding your logo, address, or other unique design elements.

Design Styles

Design options for customizing your planter, biplanters, and water features.

Top

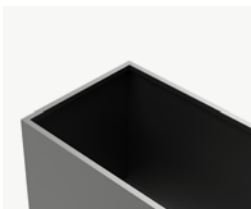
Straight Sides

Simple and clean top with hidden bracing and thicker side material. Minimal thickness .190".



Top Flange

1-2" wide double flange at top to create 'wider' look and add structural rigidity. Typically allows for standard .125" thick material on planters and other products.



Bottom

Standard

Simple corners where planter sits on the ground. Planter is placed on cushions to facilitate drainage and prevent scratching of planter and surrounding surface.



Inset

Planter bottom is inset 2"- 4" from outside edge to create a hovering effect.



Legs

Available on smaller planters, 'legs' at short ends of planter allow for open space under planter.



Color Options & Finishes

All planters and decorative screens are available in aluminum, mild steel, and corten steel. Water features and bioplanters are available in aluminum and corten steel only for durability.

Patinas

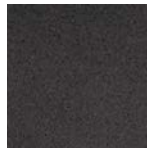


Natural Rust

Standard Powder Coatings



White



Graphite



Light Gray



Hammered Copper



Dark Bronze



Black

Custom Powder Coatings

We use the RAL color range. Please visit tiger-coatings.com to view all available options. We can also do custom paint or coating to meet your project requirements.

All of Powder Coatings are polyester based TGIC free. Many are super durable.



6105 192nd St. NE, #2
Arlington, WA 98223

360.502.6344
info@architerradesigns.com

architerradesigns.com

About Architerra

Architerra started out as a landscape architecture and installation company. During our initial years we often had a hard time finding edging, planters, and other features that met the bar for quality. So we started crafting our own, leveraging our planning and installation experience to produce elements that were not only beautiful, but also solved common problems for architects and installers.

The products we design and craft today are the products we'd want to use and install.

Our current offerings include planters, water features, modular steel edging and retaining systems, furniture, and other custom site features. Have a unique challenge? Our design team is happy to collaborate directly with architects and engineers, providing detailed CAD drawings that seamlessly integrate with building and site plans. We provide local delivery to the Pacific northwest. We ship throughout the US and Canada.

